

TECTA D180i AN

Item no.: 1010106



Presence and motion detectors Wall installation outdoor

Description

- Passive infra-red motion detector for wall installation
- 180° detection angle, 14 m
- Detection area digitally adjustable via app, no mechanical adjustment necessary
- Mode selection: Automatic / permanent light / D-MODE
- Can be linked in groups
- Adjustable brightness switching value and switch-off delay
- Area limit via lens attachment
- Mixed light measurement suitable for the control of fluorescent, incandescent, halogen lamps and LEDs
- Zero-cross switching for relay-saving switching and high lamp loads
- Test function for checking detection area
- Installation on flush-mounted socket possible (60 mm)
- Single-handed plug-in installation
- Instant start-up possible via factory preset



Technical data

TECTA D180i AN	
Operating voltage	230 V AC
Frequency	50 Hz
Stand-by consumption	<0,4 W
Light measurement	Mixed light measurement
Number of channels	1
Colour	Anthracite
Switching output	Light
Installation type	Wall installation, Outdoor
Setting range brightness	2 lx - 1000 lx
Switching capacity	10 A at 230 V AC, $\cos \phi = 1$
Detection angle	180°
Light switch-off delay	5 s - 30 min

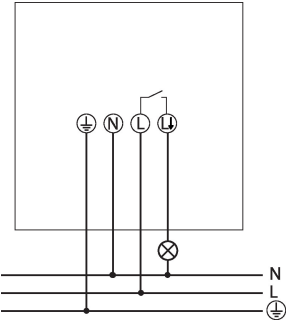
TECTA D180i AN	
Incandescent/halogen lamp load	2300 W
Energy saving lamps	150 W
LED lamp 2-8 W	600 W
LED lamp > 8 W	600 W
Lamp types	Incandescent/halogen lamps, fluorescent lamps, Energy saving lamps, LEDs
Ambient temperature	-25°C ... 55°C
Protection class	II
Type of protection	IP 55

Subject to technical changes and misprints

additional information at: www.theben.de/product/1010106

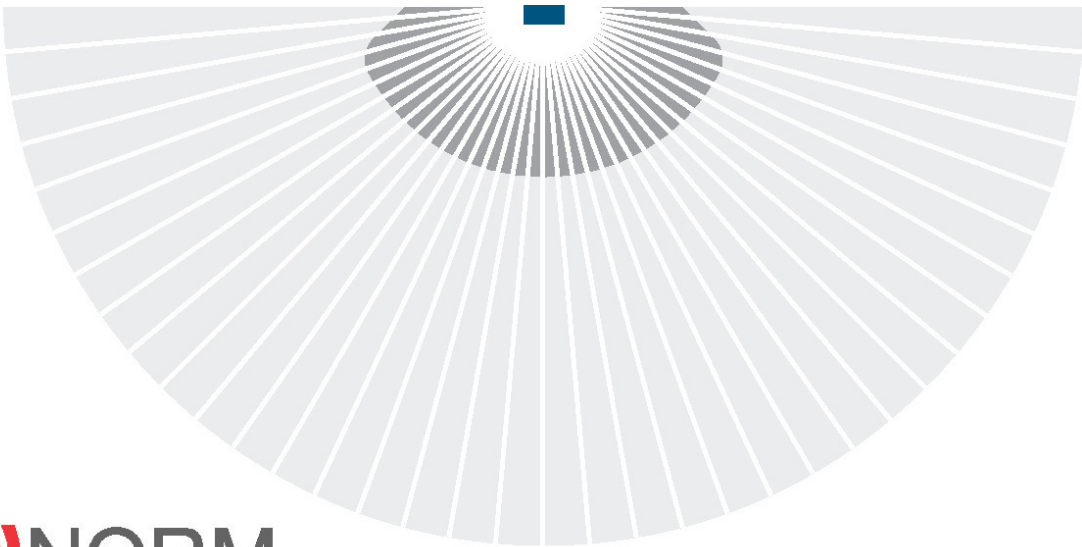
The load data are determined with exemplary selected illuminants and are therefore typical data due to the large number of available products.

Connection example



Detection range for planning applications at a temperature of 21 °C

Mounting height (A)	Diagonally (t)	Head on to (R)	
1,8 m	10 m	3 m	
2,2 m	12 m	4 m	
2.5 m	14 m	5 m	



sens))) NORM
certified

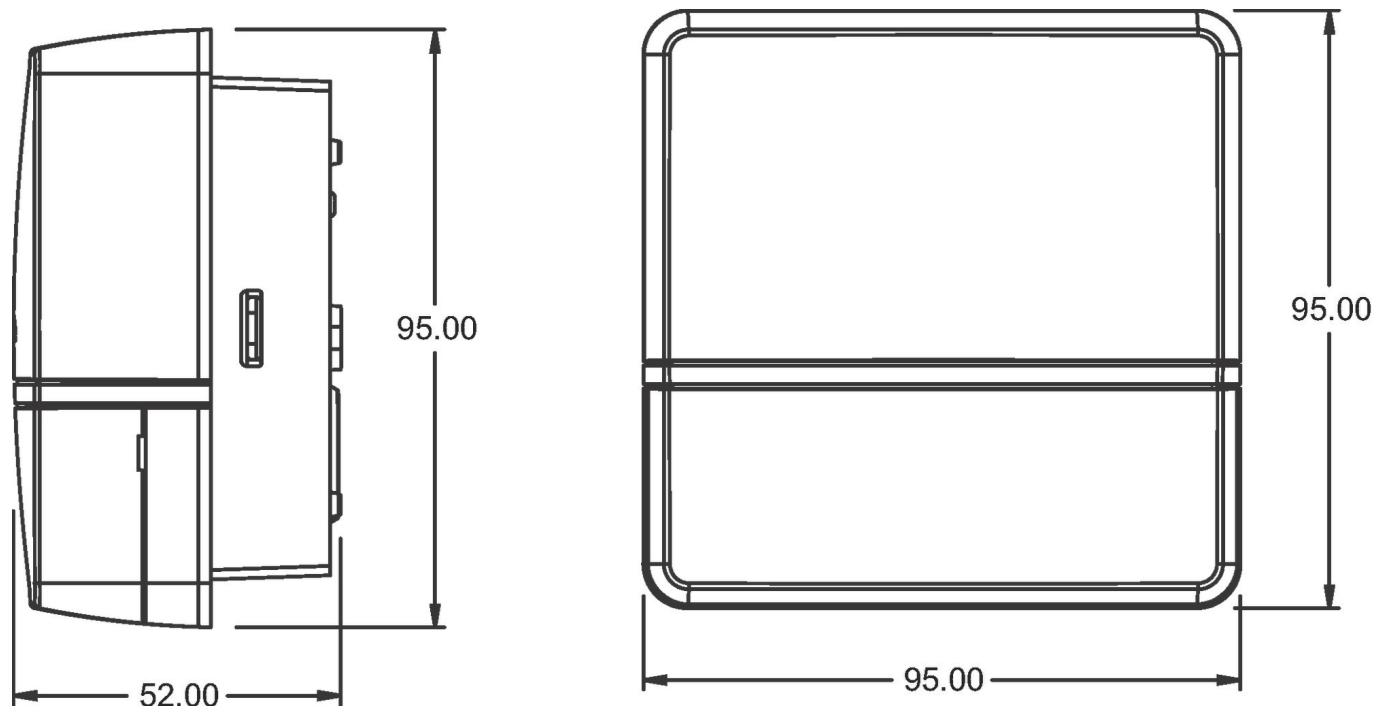


TECTA D180i AN

Item no.: 1010106

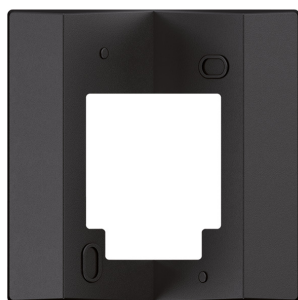
theben

Scale drawings

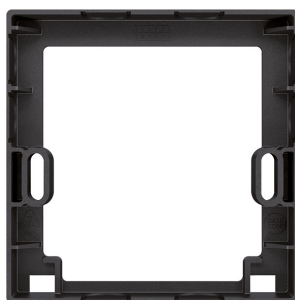


Accessories

Corner angle 10 AN
Item no.: 9080031



Spacer 10 AN
Item no.: 9080032



Subject to technical changes and misprints

additional information at: www.theben.de/product/1010106

The load data are determined with exemplary selected illuminants and are therefore typical data due to the large number of available products.